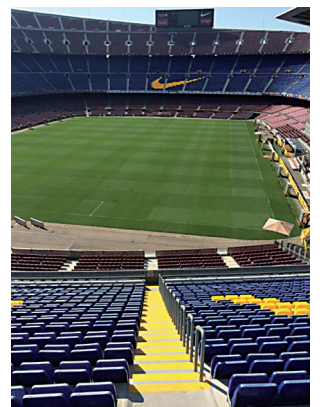
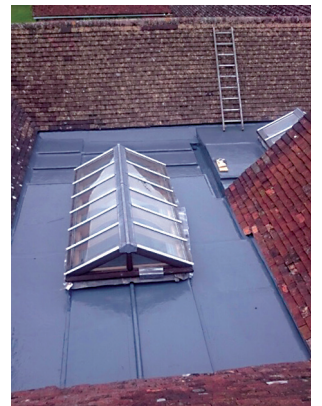


## Desmopol Liquid Polyurethane Membrane



**Desmopol** is a highly elastomeric continuous waterproofing membrane that can be installed in a single layer with excellent adhesion to all types of surfaces. Desmopol holds BBA / ETA Certification for life expectancy in excess of 25 years.

Desmopol liquid membrane comes in 25kg drums and 2Lts Accelerator or 6kg drums and 0,5Lt Accelerator.



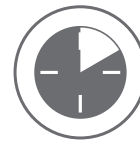
Only 1 layer with accelerator.



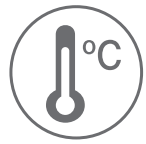
Rapid curing. Resistant to rain 30 minutes after application.



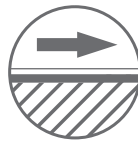
Protects against corrosion, rust and wear.



Easy and quick application. No reinforcement required.



High resistance to extreme temperatures. From -40C to 80C. Can be applied from -5C to 35C.



No seams or overlaps.



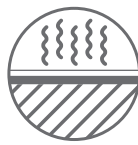
Excellent adhesion to all types of substrates; plywood, bitumen membrane, concrete, asphalt.



Can be applied even with zero pitch.



CE marked & ETA certified for 25 years.



Allows vapour diffusion.



High resistance to abrasion and high elasticity.



Completely waterproof.

CE

Applus<sup>®</sup>

tecnalia

ETA

Certified company:



Waterproofing and Insulation Systems

**EAGLE**  
Insulations

## Application

- 1** Preparation of surface: It should be clean, dry and free from any contaminants such as oil, grease and dust. Loose chippings must be removed and any cracks and splits in the substrate to be repaired with PU mastic and Tecnoband mat.
- 2** Specific areas, such as structural joints and perimeter flashings with walls, should be prepared using Tecnoband Mat embedded in a coat of Desmopol.
- 3** For Plywood/OSB decks or insulation, joints must be taped using Tecnoband Mat.
- 4** Overlaps on metal surfaces must be taped with Tecnoband 100 to avoid damage to the Desmopol Membrane.
- 5** Work out the area you will cover with the 27kg tin of mixed product (please check coverage rates for different guarantees available), do not spread the product too thin.
- 6** Pour the Accelerator into the Desmopol Membrane tin and mix on slow speed using a paddle mixer or similar until the products are visibly mixed (approx. 2 minutes).

**To avoid the presence of air bubbles the product must be mixed with a slow speed paddle mixer.**

**Important Note:** The Accelerator must be mixed at the exact ratio of 2Lt tin for 25kg. Do not modify this ratio as this may result in an incorrect chemical reaction. **Exact ratio of 110ml per each Litre of Desmopol.** Working life of mixed product in the tin is approximately 20-25 minutes.

- 7** Desmopol is self levelling, do not overwork the product.
- 8** Apply Desmopol on up stands, corners and penetrations in 2 layers or use Tixopol additive.
- 9** Apply Desmopol Membrane to the designated area by squeegee, brush or roller.
- 10** Desmopol will form a skin after 30 minutes and be completely waterproof, then walkable after 2-4hrs. Fully curing time is 24hrs.
- 11** Tecnotop 2C top coat can be used to guarantee the stability of the colour and must be used on guarantee systems over 15 years.

**Warm roof systems:** PIR ALK 250 insulation must be used on warm systems in conjunction with Eagle SA carrier membrane.

For full application guides please visit <http://www.eagle-insulations.com/product-line/liquid-waterproofing>

PROPERTIES	VALUES
Specific gravity (kg/m <sup>3</sup> )	1.320 - 1.420 (ISO 1675)
Dry extract at 105°C (% weight)	>90 (EN 1768)
Ashes at 450°C (% weight)	42 ~ 47 (EN 1879)
Application temperature range	-5°C ~ 35°C
Storage recommendation	1 year at temperature +5°C ~ 35°C
Resistance to water vapour transmission (g/m <sup>2</sup> * hour)	0,8
Tensile Strength (at 23°C) (N/mm <sup>2</sup> - MPa)	5 ~ 7
Concrete adherence (N/mm <sup>2</sup> - MPa)	>2
Hardness	>75 (Shore A)
Drying time	1 ~ 2 hours (depending on temperature and humidity)
Yield	Minimum 1.8kg at 1.4mm per m <sup>2</sup> Maximum in 1 layer 2kg
Elasticity (at 23°C)	±600% ~ ±750%

*PLEASE NOTE: Temperature and humidity conditions may affect the curing times.*

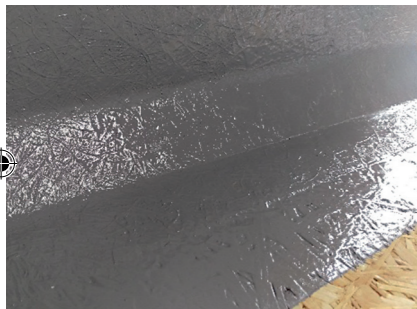
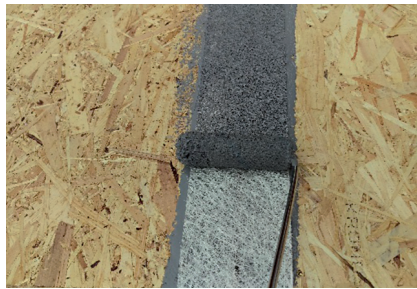
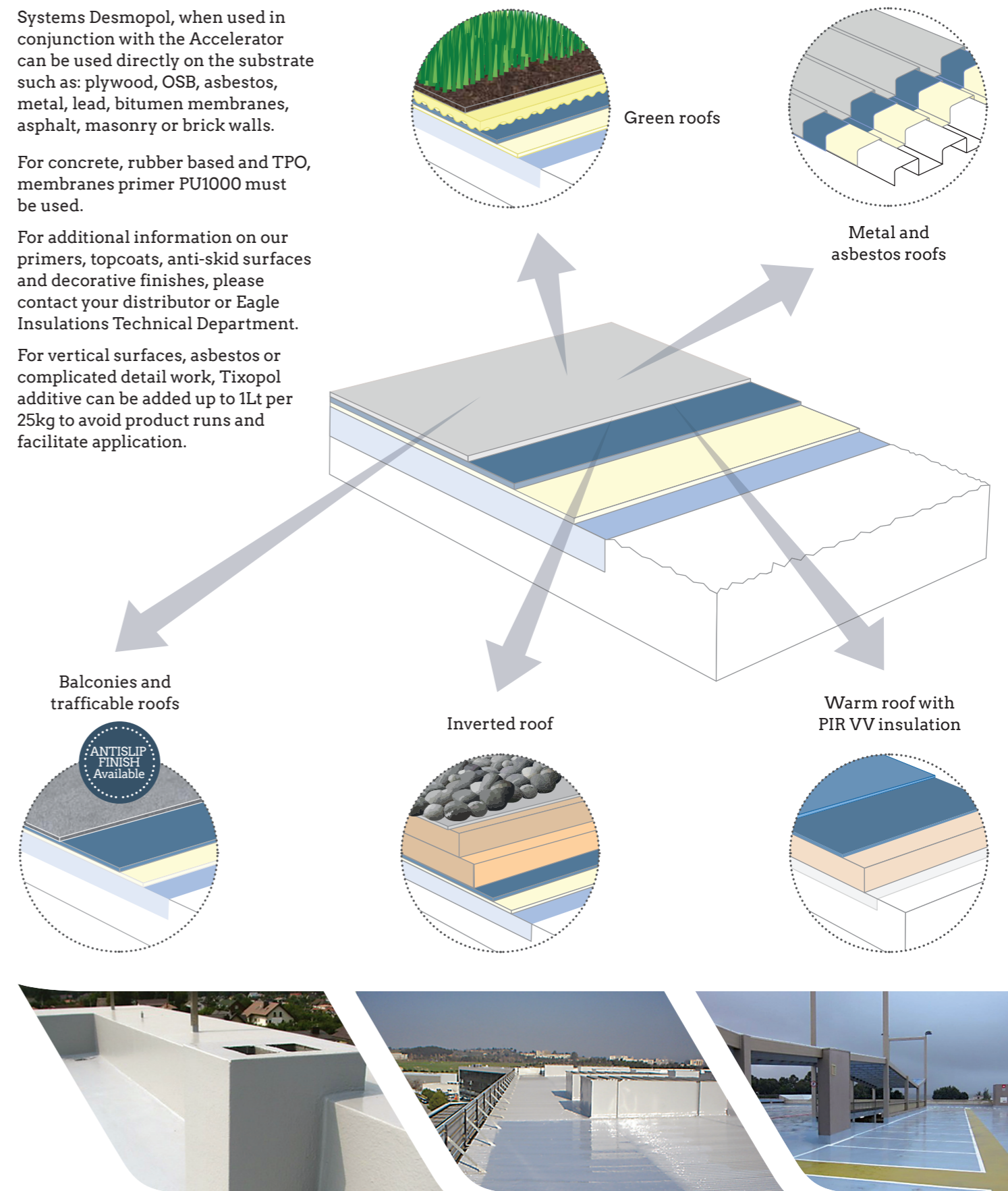
## Systems

Systems Desmopol, when used in conjunction with the Accelerator can be used directly on the substrate such as: plywood, OSB, asbestos, metal, lead, bitumen membranes, asphalt, masonry or brick walls.

For concrete, rubber based and TPO, membranes primer PU1000 must be used.

For additional information on our primers, topcoats, anti-skid surfaces and decorative finishes, please contact your distributor or Eagle Insulations Technical Department.

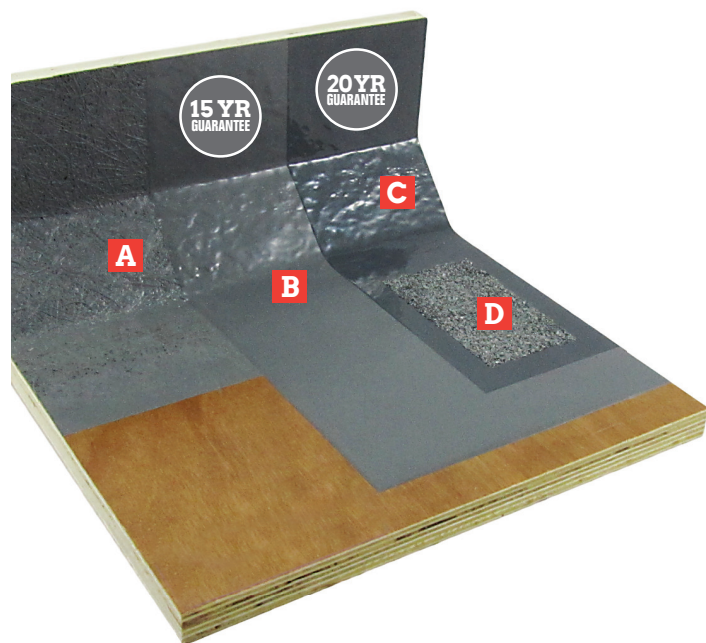
For vertical surfaces, asbestos or complicated detail work, Tixopol additive can be added up to 1Lt per 25kg to avoid product runs and facilitate application.



Waterproofing and Insulation Systems



## All Year Liquid Roofing



### A Details & Joints

- Apply a layer of Liquid Membrane to all relevant areas
- Tecnoband matting must be used on any joints, cracks or change of materials
- Apply a 2nd layer of Liquid Membrane to ensure the matting is fully embedded

### C Recommended Topcoat Application

- For trafficable areas, UV stability and longer guarantee
- Apply a layer of Tecnotop across the full surface no later than 48 hours later

### B 1 Layer Application

- Apply the Liquid Membrane across the full surface
- No visible seams or overlaps
- For quick curing, mix the Liquid Membrane with an Accelerator
- Waterproof & Touch Dry in 30min.

### D Finishes

- Add a layer of granules for a decorative effect
- This layer also offers an anti-skid surface on balconies and walkways

## About Us

**Eagle Insulations** is a UK based insulation manufacturer focused on designing and producing innovative and cost efficient roofing, thermal and acoustic systems. Our flexibility is your advantage as we have the most appropriate system for each application.

PIR with different finishes to adapt to torch on, single ply or liquid applied waterproofing systems to suit every budget and assure the safest solution for your roof.

Eagle Insulations works in partnership with top manufacturers to assure the products meet the market requirements to the highest standard. Our products are certified with CE mark, ISO 9001 and 14001.

We have an international presence, cooperating with manufacturers and distributors world-wide and we currently have distributors in Europe, USA, Middle-East, South-East Asia and Australia.

### Our product range:

- Torch on roofing membranes
- Self-adhesive bitumen tanking membranes and gas barriers
- PIR thermal insulation
- Extruded polystyrene (XPS)
- Tapered systems, design and manufacturing on PIR and XPS
- Cladding and roofing composite panels (PIR and mineral wool)
- Acoustic membranes and damping sheets
- Single ply membranes
- Liquid waterproofing and bitumen solutions
- Breathable felts and roofing auxiliaries
- Chemical compounds for the building industry

Waterproofing and Insulation Systems

**EAGLE**  
Insulations

Tel | +44(0) 3304 004170 | [info@eagle-insulations.com](mailto:info@eagle-insulations.com)  
Fax | +44(0) 3304 004171 | [www.eagle-insulations.com](http://www.eagle-insulations.com)

